

# Unlocking the Future: Our Vision and Innovations Ahead

Partner Forum 2023

Romane DOSQUET, Olivier BOMBOIR & Gilles GERON

*28th September 2023*



# Today's presenters



**Romane DOSQUET**  
Product Manager



**Olivier BOMBOIR**  
Chief Commercial Officer



**Gilles GERON**  
Product Manager

# Today's agenda



## **InView future**

UX & UI, opening & Mesh

---



## **Module FW**

Upgrade via InView

---



## **Grid interactive**

Daisy chain concept

---



## **Sierra**

Further evolutions

---



## **Sizing Services**

Combined with EMS

---



## **EV charging**

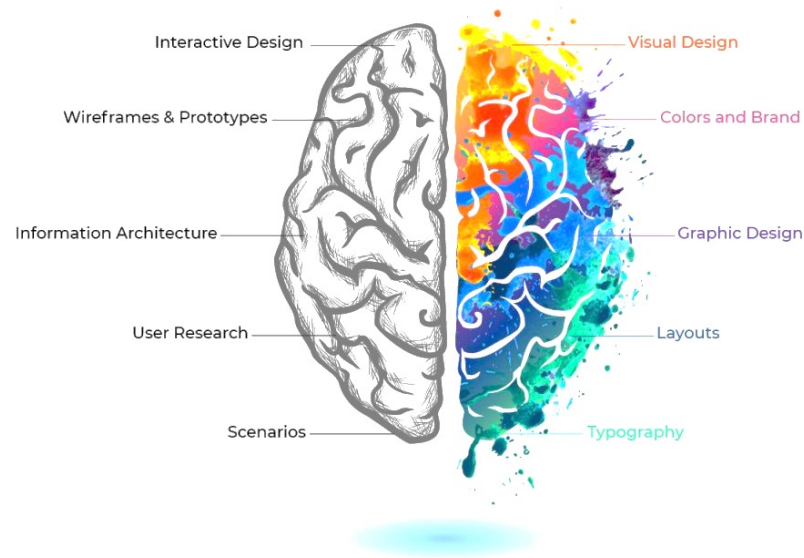
With Stabiliti

# INVIEW FUTURE

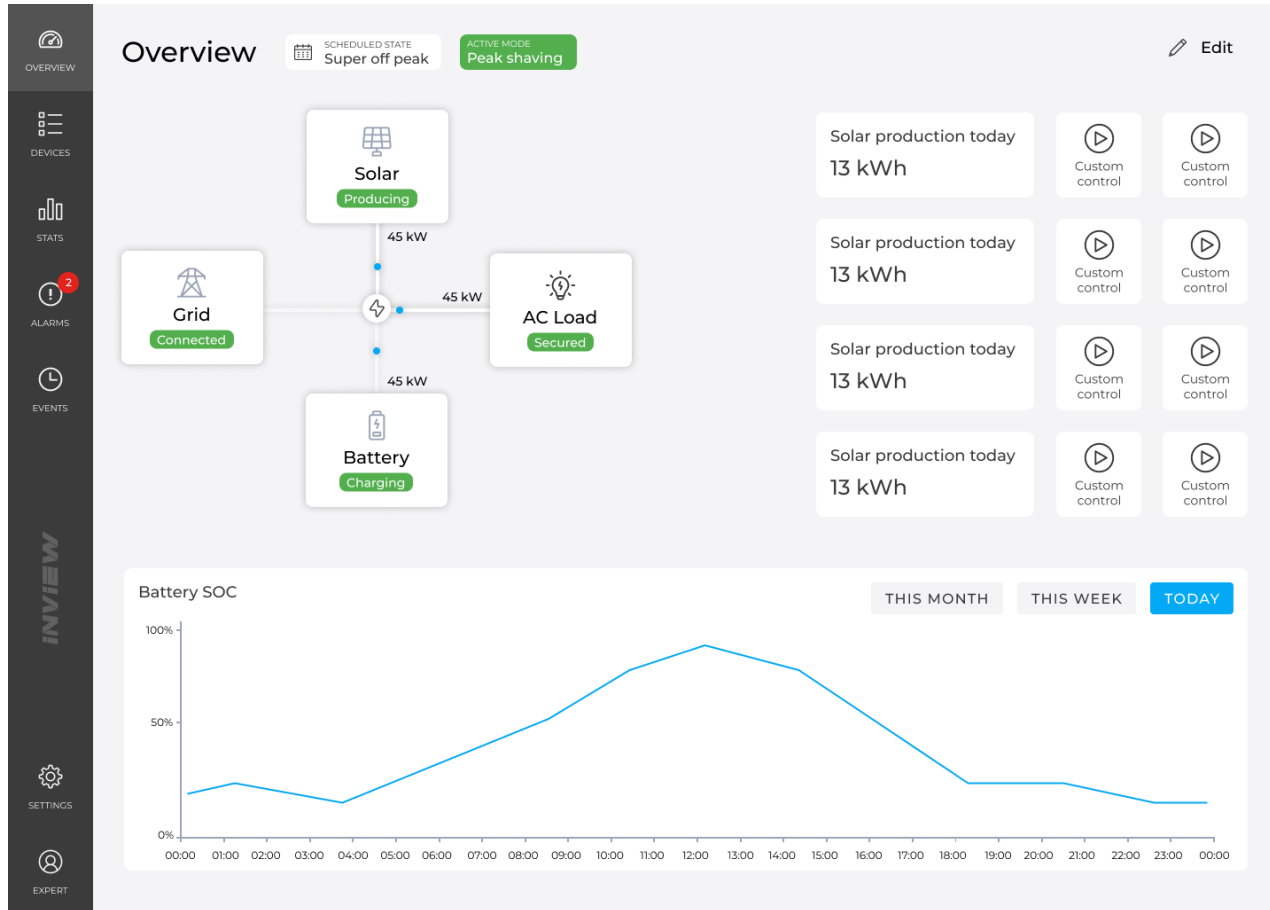
---

# Beyond InView 6...

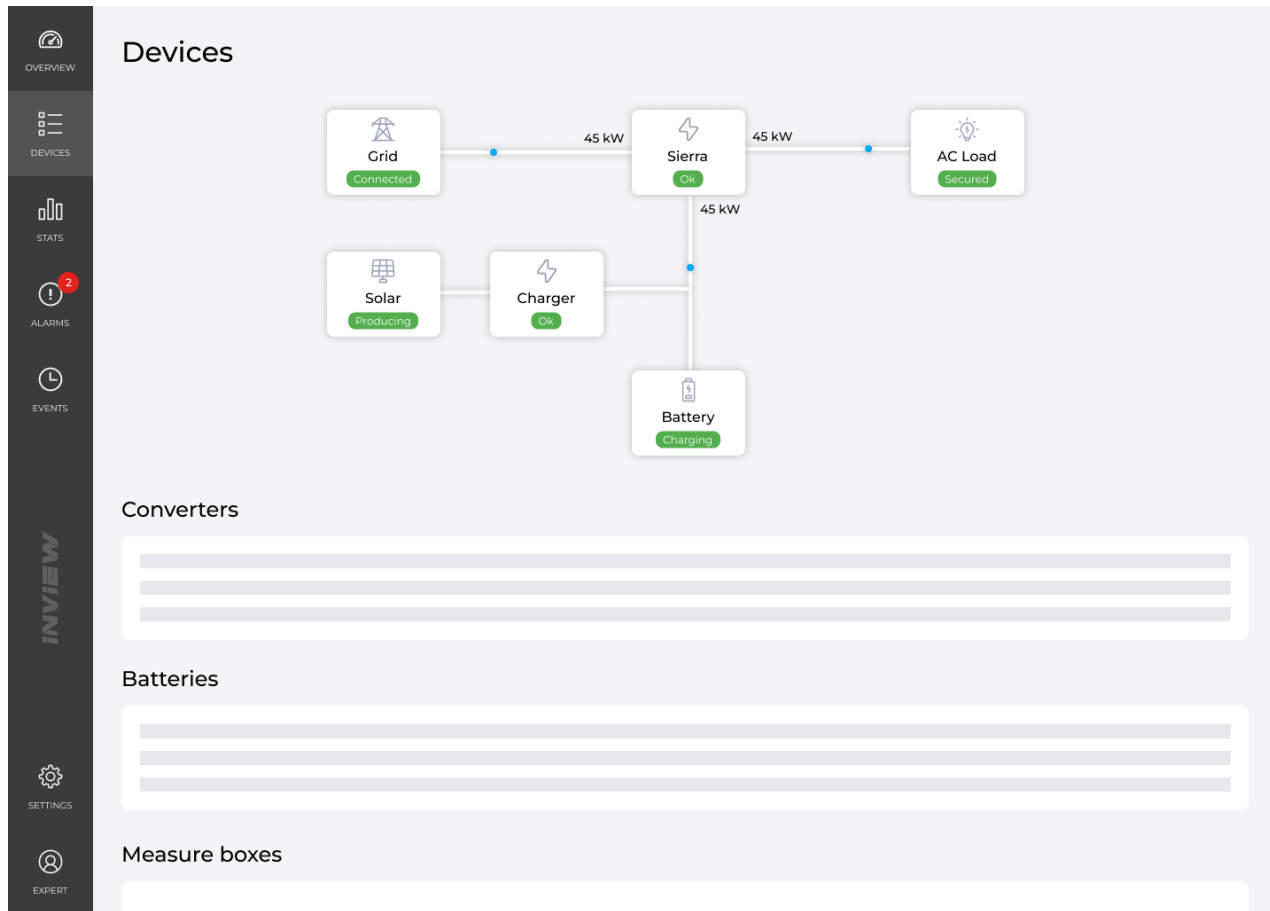
## UX vs UI



# Enjoy a fully customizable dashboard



# Access to technical view & detailed component list



# Benefit from improved historical data plots with easy download options





# Monitor active alarm and detailed event pages

The screenshot displays the INVIEW monitoring interface. On the left is a dark sidebar with navigation icons for Overview, Devices, Stats, Alarms (with a red '2' notification badge), Events, Settings, and Expert. The main content area is titled 'Events' and includes 'EXPORT' and 'CLEAR' buttons. A table lists three events for ID 'AL202':

| Severity     | ID    | Name                | Origin | Date        | Timeline |
|--------------|-------|---------------------|--------|-------------|----------|
| Major        | AL202 | Name<br>Description | DC     | 12/24 08:45 | END      |
| Notification | AL202 | Name<br>Description | System | 12/24 08:45 |          |
| Major        | AL202 | Name<br>Description | DC     | 12/24 08:45 | START    |

The 'Timeline' column shows a vertical line with three circular markers. The top marker is labeled 'END', the middle one is unlabeled, and the bottom one is labeled 'START'. A horizontal line connects the 'END' and 'START' markers, indicating the duration of the event.

# Access to fully dedicated settings page

The screenshot displays the INVIEW Settings page. On the left is a dark sidebar with navigation options: OVERVIEW, DEVICES, STATS, ALARMS (with a red notification badge '2'), EVENTS, SETTINGS (highlighted with a gear icon), and EXPERT. The main content area is titled 'Settings' and 'All', featuring a search bar. Below the search bar are six category cards: Energy (with a lightning bolt icon), Alarms (with a bell icon), Administration (with a wrench icon), Import / Export (with a double-headed arrow icon), and Wizards (with a pencil icon). Each card includes a category description in a few words. The 'Administration' card lists sub-items: Site, Users, Software update, Language, Web server, Support, Clock, and License.

**Settings** All

Energy  
System  
???  
Large system

Alarms

Administration  
Site  
Users  
Software update  
Language  
Web server  
Support  
Clock  
License

Import / Export

Wizards

Energy  
Category description in a few words

Alarms  
Category description in a few words

Administration  
Category description in a few words

Import / Export  
Category description in a few words

Wizards  
Category description in a few words

# Enjoy Wizard for easy configuration



Scheduling interface showing a calendar for 2023 with day templates and monthly views for July, August, September, and October.

**Scheduling** [CANCEL] [SAVE]

Today < > 2023 [Month] [Week] [Year]

**DAY TEMPLATES** ?

- Summer weekday
- Summer weekend
- Winter weekday
- Winter weekend
- + New template

**July**

| Mon | Tue | Wed | Thu | Fri | Sat | Sun |
|-----|-----|-----|-----|-----|-----|-----|
|     |     |     |     |     | 1   | 2   |
| 3   | 4   | 5   | 6   | 7   | 8   | 9   |
| 10  | 11  | 12  | 13  | 14  | 15  | 16  |
| 17  | 18  | 19  | 20  | 21  | 22  | 23  |
| 24  | 25  | 26  | 27  | 28  | 29  | 30  |
| 31  |     |     |     |     |     |     |

**August**

| Mon      | Tue      | Wed      | Thu      | Fri      | Sat      | Sun      |
|----------|----------|----------|----------|----------|----------|----------|
|          | 1        | 2        | 3        | 4        | 5        | 6        |
| 7        | 8        | 9        | 10       | 11       | 12       | 13       |
| Summer w | Summer w | Summer w | Summer w | Summer w | Summer w | Summer w |
| +3 more  |          |          |          |          |          |          |
| 14       | 15       | 16       | 17       | 18       | 19       | 20       |
| 21       | 22       | 23       | 24       | 25       | 26       | 27       |
| 28       | 29       | 30       | 31       |          |          |          |
|          |          |          |          |          |          |          |

**September**

| Mon | Tue | Wed | Thu | Fri | Sat | Sun |
|-----|-----|-----|-----|-----|-----|-----|
|     |     |     |     | 1   | 2   | 3   |
| 4   | 5   | 6   | 7   | 8   | 9   | 10  |
| 11  | 12  | 13  | 14  | 15  | 16  | 17  |

**October**

| Mon | Tue | Wed | Thu | Fri | Sat | Sun |
|-----|-----|-----|-----|-----|-----|-----|
|     |     |     |     |     |     | 1   |
| 2   | 3   | 4   | 5   | 6   | 7   | 8   |
| 9   | 10  | 11  | 12  | 13  | 14  | 15  |

# Open CE+T Product to Outside World

## PROTOCOLS



- Modbus TCP/IP
- SNMP

**NEW ???**

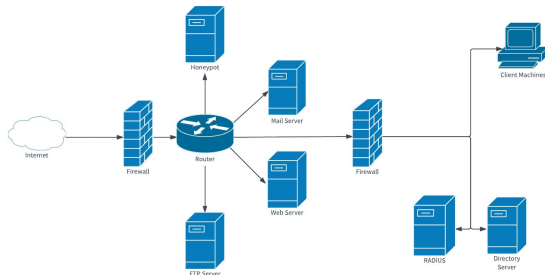
- MQTT
- CoAP
- AMQP
- ZeroMQ



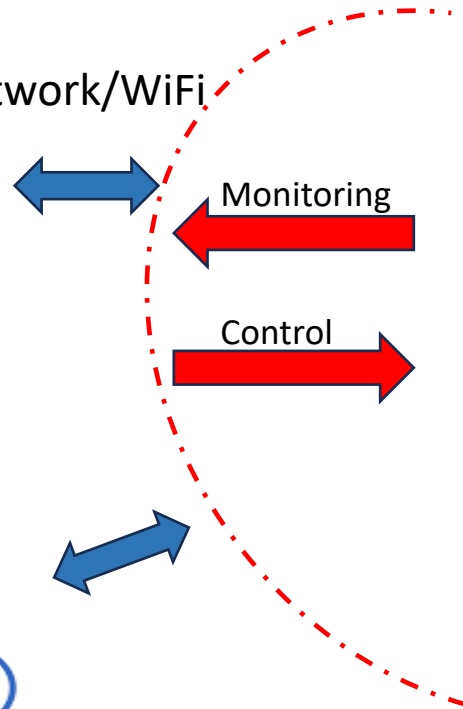
- REST API
- Other ...

## NETWORKS

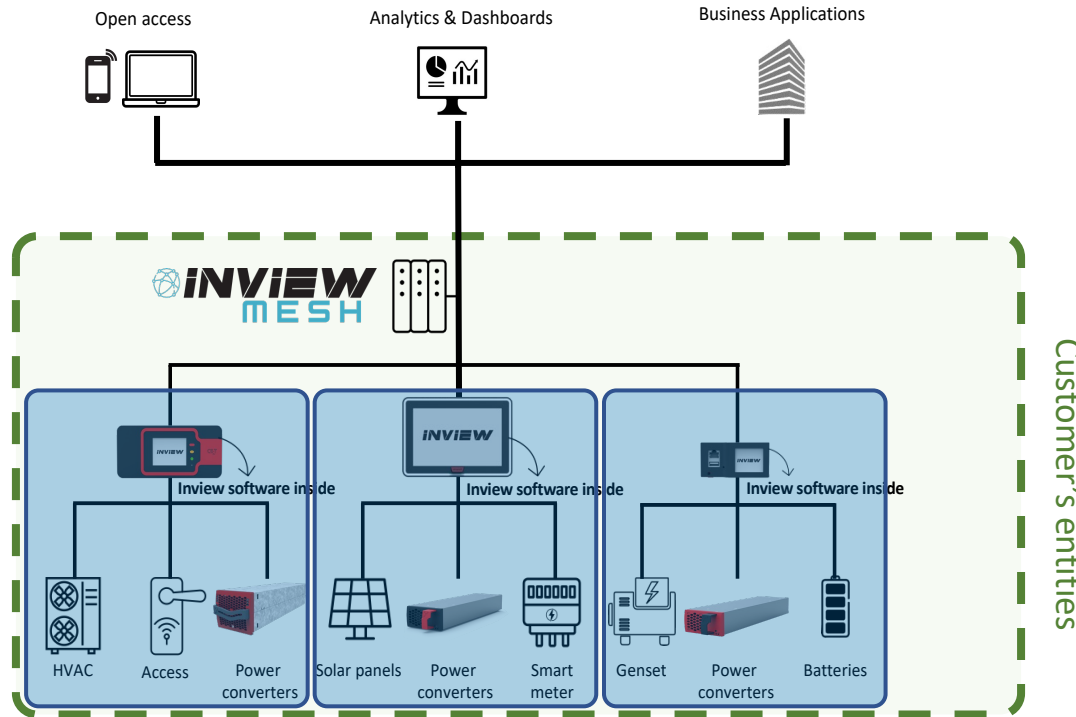
LAN - Customer Intranet/Network/WiFi



WAN - Internet/Cloud/4G



# InView Mesh



**What**  
?

- Multi-site monitoring

**WHY?**

- Interconnect all your site into a single platform
- Monitor, control & upgrade your entire infrastructure remotely with a unique tool
- Potential bridge to EMS

# **MODULE FIRMWARE UPGRADE VIA INVIEW**

---

# Upgrade all your Sierra modules in 1 click!



Access the latest developments!



# **GRID INTERACTIVE LARGE SYSTEM**

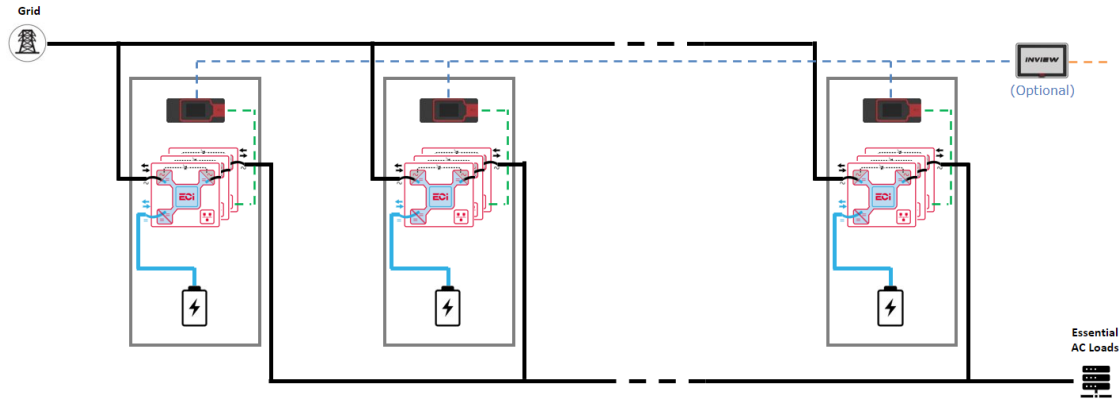
---



# Create a daisy chain of certified sub-system



**Daisy chain concept:** Wiring scheme in which **several devices** are connected directly **in parallel**.



**Scalability:** Build on existing design & certificates!

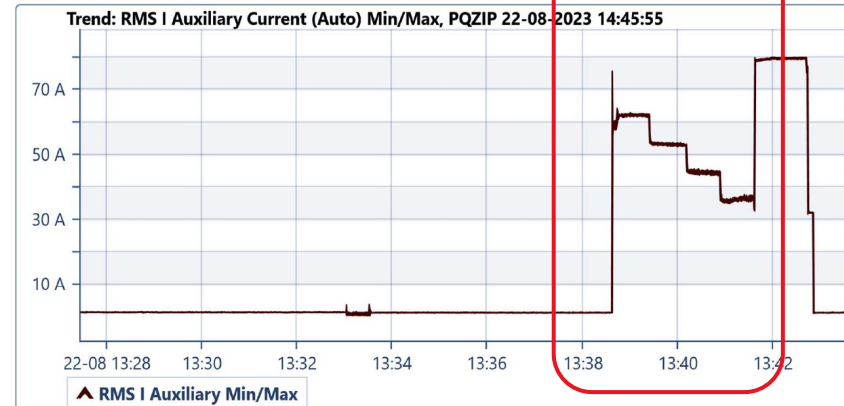
# SIERRA FURTHER EVOLUTION

---

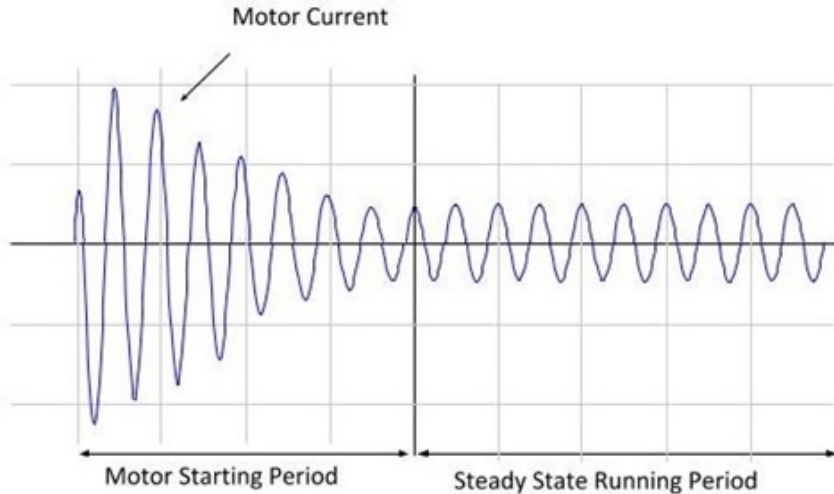
# Keep enhancing Sierra 25 operations with Genset



- Seamless
- Enhanced
- Peak-optimized



# Sierra 25 efficiently manages **AC output current**, optimizing **motor startup** and **preventing system oversizing**



- **Increase starting current** per module to **exceed LRC** with a minimum number of module
- Once voltage increases, keep providing **power for about 1sec** to **allow acceleration** process and reach a steady state

# SIZING SERVICE

---

# System sizing service for partners



How to optimally size your system?



Study service based on EMS algorithm



Complete report delivery



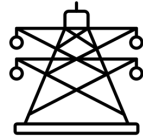
Refundable on system order, consistency with EMS command

# STABILITÀ FOR EV CHARGING

---

# Mitigating Challenges of DC Fast Charging with Battery Storage Systems

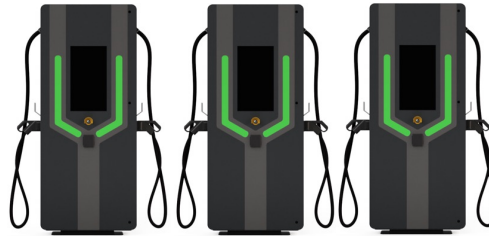
Energy Harvesting



Energy Storage



Energy Utilization



PARTNERED SOLUTIONS



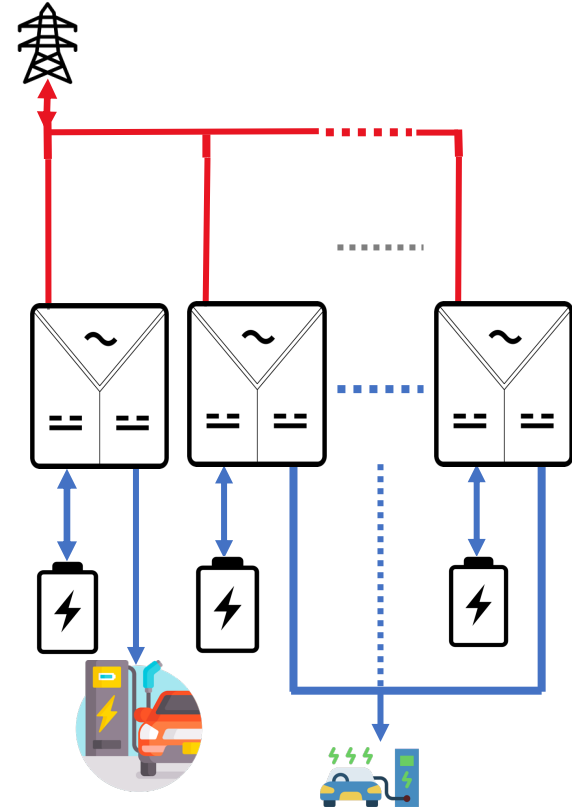
# The **charging station switches** between several **Stabiliti** converters depending on the **power needed** for **EVs**



50 kW max/converter



250 kW with 5 converters



Thank you  
for your attention

Check our website

**[www.cet-power.com](http://www.cet-power.com)**

Follow us

